

烟台艾创机器人科技有限公司 YANTAI AITRON ROBOTIC TECHNOLOGY CO.,LTD.

Yantai Aitron Robotic Technology Co., Ltd. is a wholly-owned subsidiary of Yantai eddie Precision Machinery Co., LTD. (stock code: 603638). Focus on the independent research and development, production and sales of industrial robots, RV reducer, electric motor control, AGV products, is committed to providing customers with complete sets of industrial robots and integrated applications and other automation solutions.

Aitron Tech is committed to provide one-stop electric products and solutions, the company focus on servo motor, new energy motor, permanent magnet synchronous motor, controller system research and development, industrialization manufacturing and sales, products have formed several big series, widely used in industrial robot industry, engineering machinery industry (excavator, loader, aerial work platform, mining wide-body car, forklift), agricultural machinery industry, unmanned sweeper and intelligent logistics equipment.



Electric Motor patent

200+

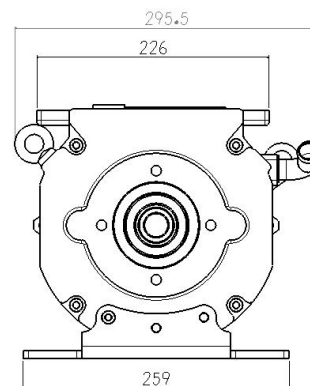
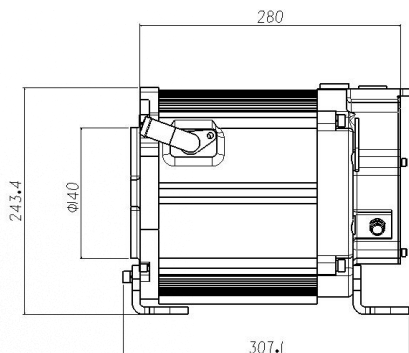
Electric Motor models

50+

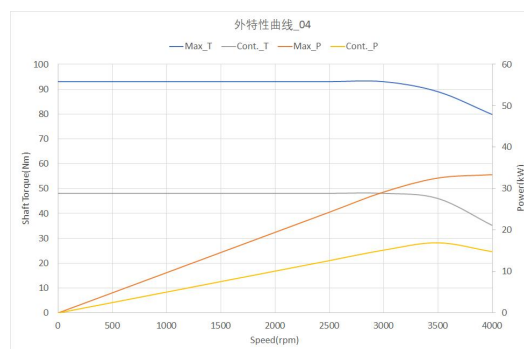
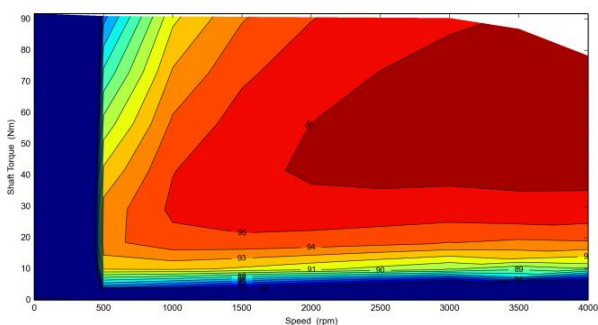


Excavator Electric Motor

TZ180XB10

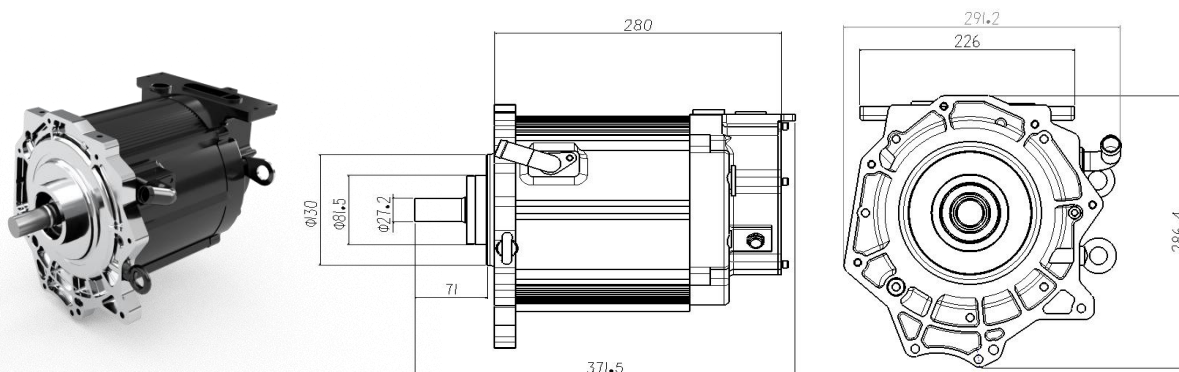


电机类型 Electric Motor type	TZ	型号 Model	0004
连接方式 Connection mode	Y	冷却方式 Cooling-down method	自冷 natural cooling
额定电压 (VDC) Rated voltage	310	反电动势 (V peak) Counter electromotive force	52V/1000rpm
额定功率 (kW) Rated Power	10	峰值功率 (kW) Maximum Power	20
额定扭矩 (N·m) Rated Torque	47.7	峰值扭矩 (N·m) Maximum Torque	90
额定转速 (rpm) Rated Speed	2200	最高转速 (rpm) Maximum speed	4000
绝缘等级 Insulation grade	H	防护等级 levels of protection	IP66
外形尺寸 (mm) External dimensions	260*200*220	峰值电流 (Arms) Maximum Current	105
重量 (KG) Weight	32	工作制 Work Mode	S9

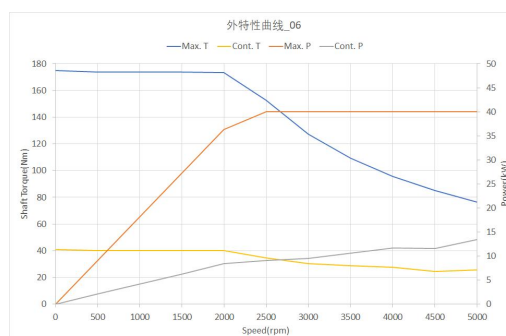
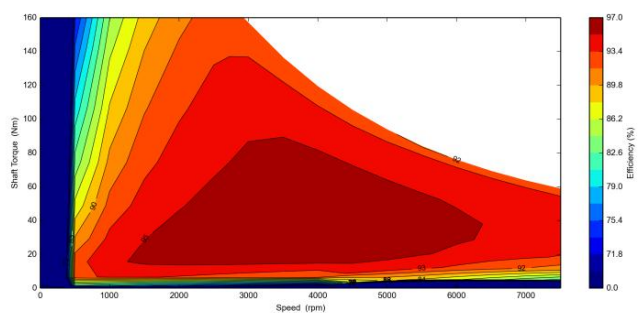


Forklift Electric Motor

TZ180XQS12

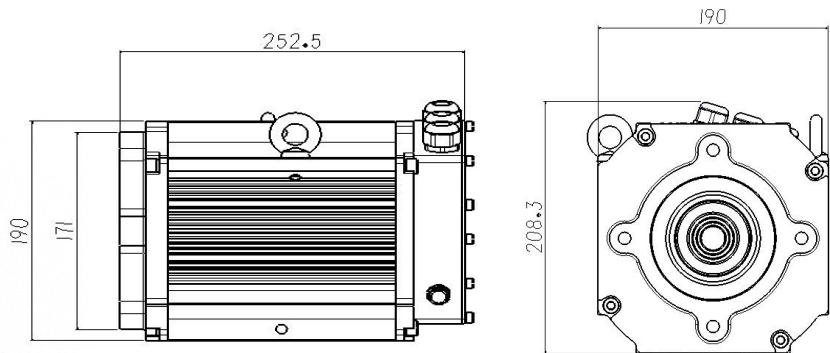
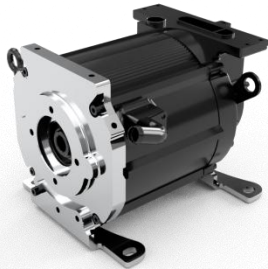


电机类型 Electric Motor type	TZ	型号 Model	0006
连接方式 Connection mode	Y	冷却方式 Cooling-down method	水冷 water cooling
额定电压 (VDC) Rated voltage	200	反电动势 (V peak) Counter electromotive force	29.8V/1000rpm
额定功率 (kW) Rated Power	12	峰值功率 (kW) Maximum Power	30
额定扭矩 (N·m) Rated Torque	38.2	峰值扭矩 (N·m) Maximum Torque	160
额定转速 (rpm) Rated Speed	3000	最高转速 (rpm) Maximum speed	7500
绝缘等级 Insulation grade	H	防护等级 levels of protection	IP67
外形尺寸 (mm) External dimensions	375*220*260	峰值电流 (Arms) Maximum Current	250
重量 (KG) Weight	43	工作制 Work Mode	S2-60min

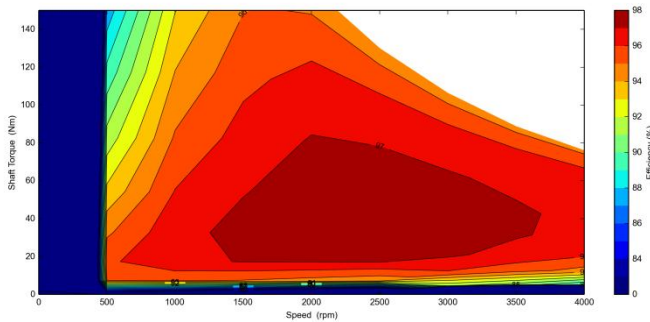


Forklift Electric Motor

TZ180XBS17

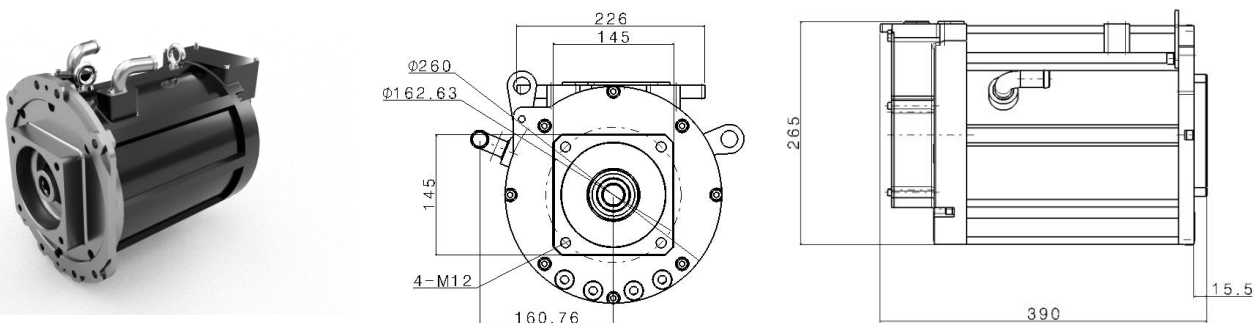


电机类型 Electric Motor type	TZ	型号 Model	0007
连接方式 Connection mode	Y	冷却方式 Cooling-down method	水冷 water cooling
额定电压 (VDC) Rated voltage	200	反电动势 (V peak) Counter electromotive force	32V/1000rpm
额定功率 (kW) Rated Power	17	峰值功率 (kW) Maximum Power	21
额定扭矩 (N·m) Rated Torque	78.1	峰值扭矩 (N·m) Maximum Torque	105
额定转速 (rpm) Rated Speed	2079	最高转速 (rpm) Maximum speed	4000
绝缘等级 Insulation grade	H	防护等级 levels of protection	IP67
外形尺寸 (mm) External dimensions	310*230*250	峰值电流 (Arms) Maximum Current	170
重量 (KG) Weight	43	工作制 Work Mode	S3-15%

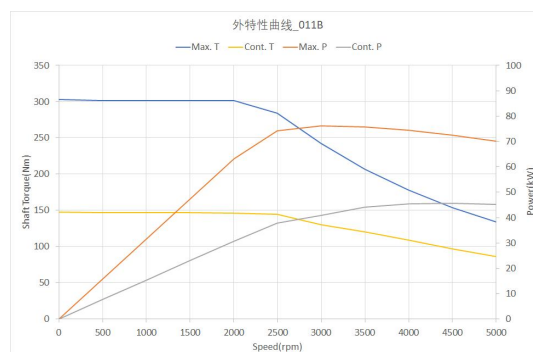
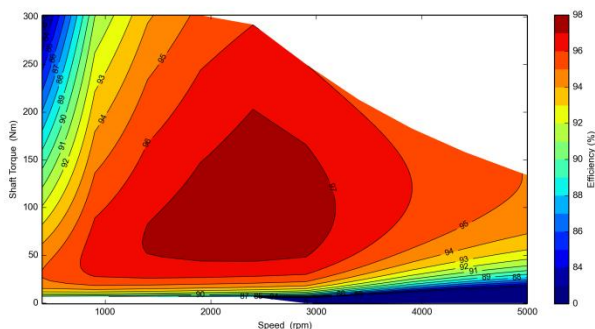


Loader Electric Motor

TZ210XBS30

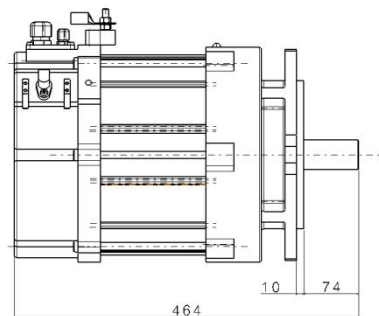
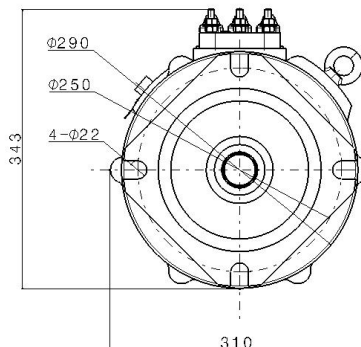


电机类型 Electric Motor type	TZ	型号 Model	0011-B
连接方式 Connection mode	Y	冷却方式 Cooling-down method	水冷 water cooling
额定电压 (VDC) Rated voltage	350	反电动势 (V peak) Counter electromotive force	90V/1000rpm
额定功率 (kW) Rated Power	30	峰值功率 (kW) Maximum Power	60
额定扭矩 (N·m) Rated Torque	150	峰值扭矩 (N·m) Maximum Torque	350
额定转速 (rpm) Rated Speed	2000	最高转速 (rpm) Maximum speed	5000
绝缘等级 Insulation grade	H	防护等级 Levels of protection	IP67
外形尺寸 (mm) External dimensions	458*260*337	峰值电流 (Arms) Maximum Current	185
重量 (KG) Weight	67.8	工作制 Work Mode	S9

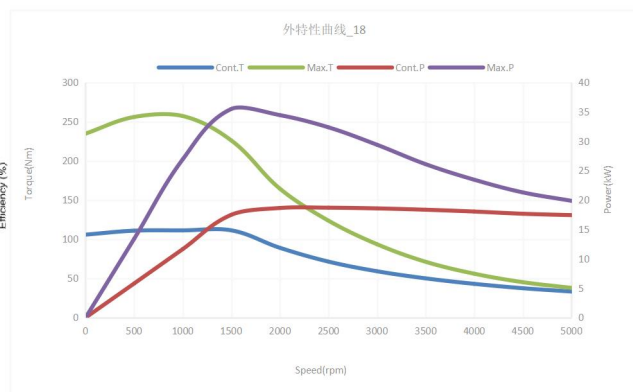
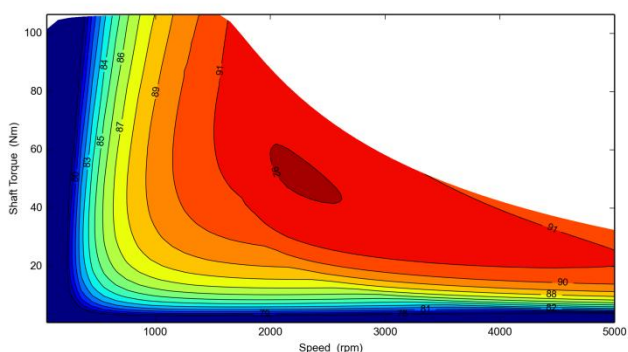


Aerial Work Vehicle (Straight arm) Electric Motor

XYQD-18

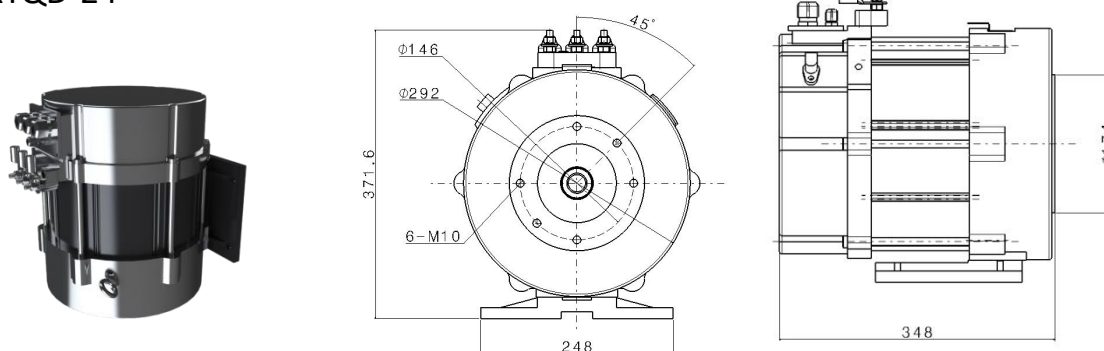


电机类型 Electric Motor type	XYQD	型号 Model	18-A01
连接方式 Connection mode	Δ	冷却方式 Cooling-down method	自冷 natural cooling
额定电压 (VDC) Rated voltage	54	反电动势 (V peak) Counter electromotive force	/
额定功率 (kW) Rated Power	18	峰值功率 (kW) Maximum Power	35
额定扭矩 (N·m) Rated Torque	53	峰值扭矩 (N·m) Maximum Torque	160
额定转速 (rpm) Rated Speed	3243	最高转速 (rpm) Maximum speed	5000
绝缘等级 Insulation grade	H	防护等级 Levels of protection	IP54
外形尺寸 (mm) External dimensions	343*310*464	峰值电流 (Arms) Maximum Current	500
重量 (KG) Weight	108	工作制 Work Mode	S2-60min

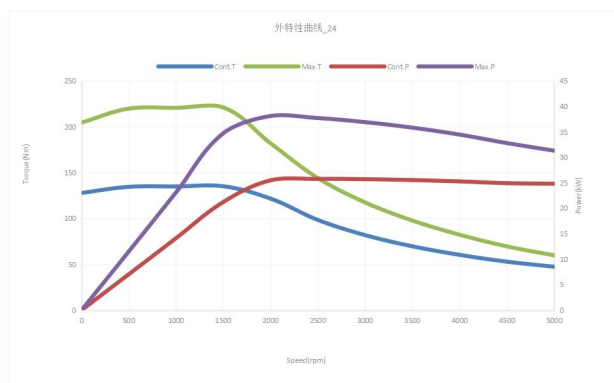
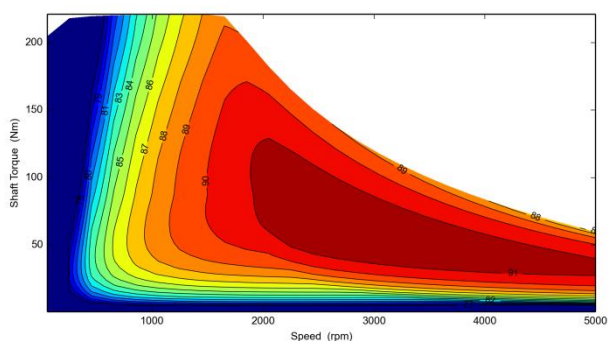


Aerial Work Vehicle (Straight arm) Electric Motor

XYQD-24

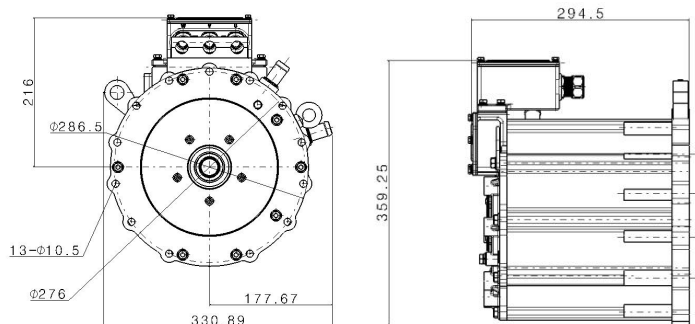


电机类型 Electric Motor type	XYQD	型号 Model	24-A01
连接方式 Connection mode	Δ	冷却方式 Cooling-down method	自冷 natural cooling
额定电压 (VDC) Rated voltage	56	反电动势 (V peak) Counter electromotive force	/
额定功率 (kW) Rated Power	24	峰值功率 (kW) Maximum Power	38
额定扭矩 (N·m) Rated Torque	106	峰值扭矩 (N·m) Maximum Torque	320
额定转速 (rpm) Rated Speed	2150	最高转速 (rpm) Maximum speed	4000
绝缘等级 Insulation grade	H	防护等级 Levels of protection	IP54
外形尺寸 (mm) External dimensions	371.6*318*348	峰值电流 (Arms) Maximum Current	490
重量 (KG) Weight	115	工作制 Work Mode	S2-60min

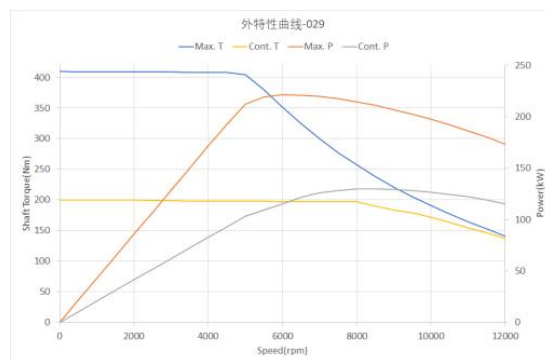
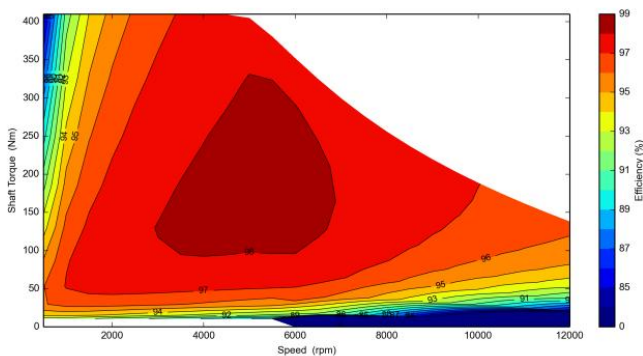


Light Trucks Electric Motors

TZ220XQS60

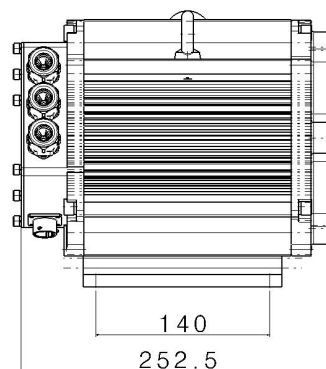
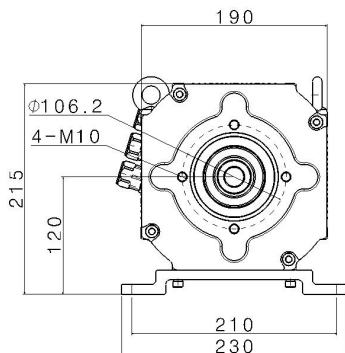
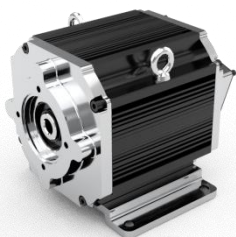


电机类型 Electric Motor type	TZ	型号 Model	0029
连接方式 Connection mode	Y	冷却方式 Cooling-down method	水冷 water cooling
额定电压 (VDC) Rated voltage	560	反电动势 (V peak) Counter electromotive force	63.6V/1000rpm
额定功率 (kW) Rated Power	75	峰值功率 (kW) Maximum Power	155
额定扭矩 (N·m) Rated Torque	190	峰值扭矩 (N·m) Maximum Torque	389
额定转速 (rpm) Rated Speed	3770	最高转速 (rpm) Maximum speed	12000
绝缘等级 Insulation grade	H	防护等级 Levels of protection	IP67
外形尺寸 (mm) External dimensions	300*330*364	峰值电流 (Arms) Maximum Current	320
重量 (KG) Weight	55	工作制 Work Mode	S9



Tractor Electric Motor

TZ180XB6



电机类型 Electric Motor type	TZ	型号 Model	0009
连接方式 Connection mode	Y	冷却方式 Cooling-down method	自冷 natural cooling
额定电压 (VDC) Rated voltage	350	反电动势 (V peak) Counter electromotive force	50V/1000rpm
额定功率 (kW) Rated Power	6	峰值功率 (kW) Maximum Power	20
额定扭矩 (N·m) Rated Torque	26	峰值扭矩 (N·m) Maximum Torque	90
额定转速 (rpm) Rated Speed	2200	最高转速 (rpm) Maximum speed	4000
绝缘等级 Insulation grade	H	防护等级 Levels of protection	IP68
外形尺寸 (mm) External dimensions	259*230*215	峰值电流 (Arms) Maximum Current	105
重量 (KG) Weight	34.4	工作制 Work Mode	S1

